



BUSHARA
HEIGHTS



We at Bushara Heights understand your elation for a life beyond four walls, hence the space have been carved thoughtfully. Every home opens to a breath of fresh air and gives a warm experience of calmness and relaxation. Your own space where you can pamper your family and charge up to enjoy each moment, for the rest of your life!

BUSHARA HEIGHTS

not for print

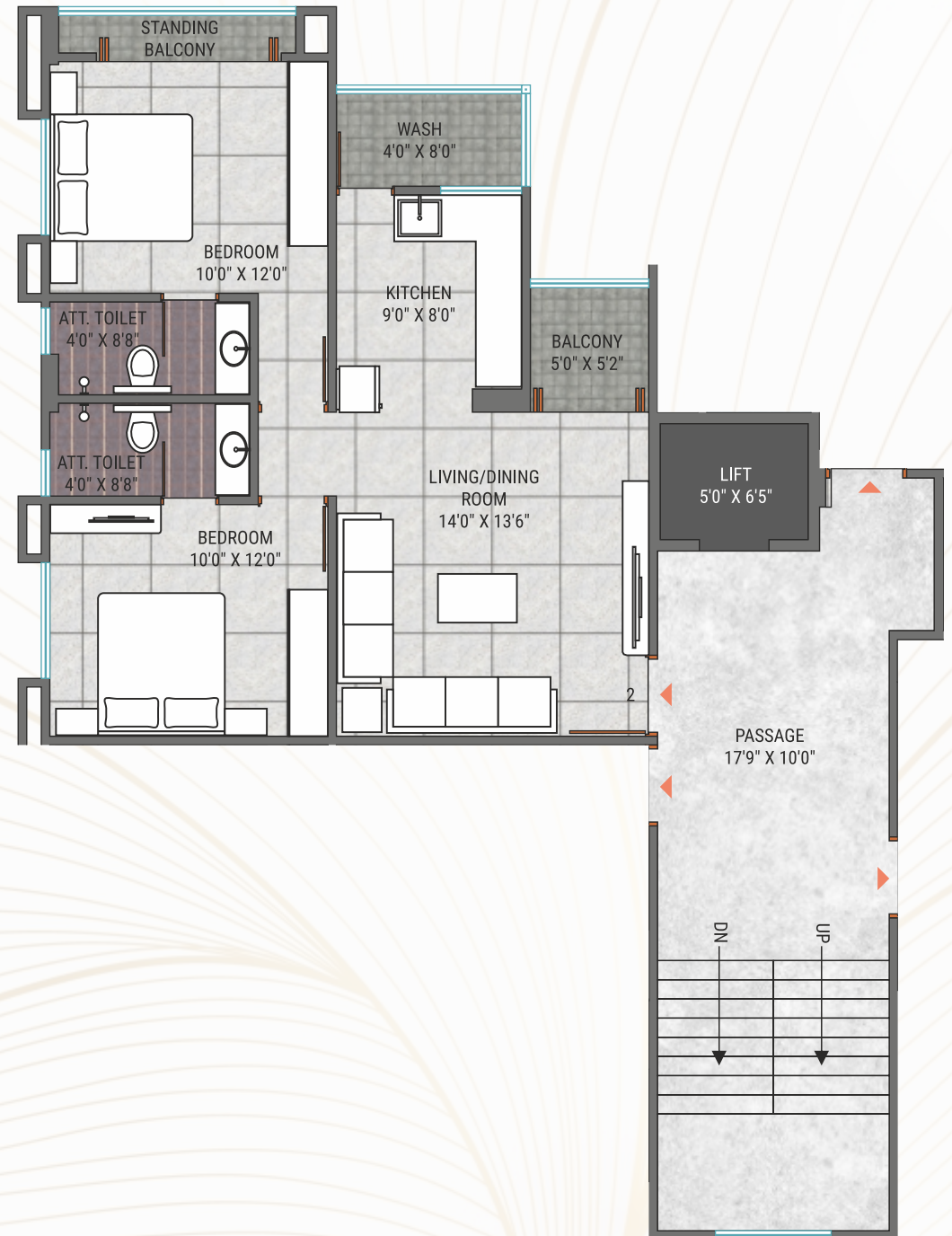
BUSHARA HEIGHTS



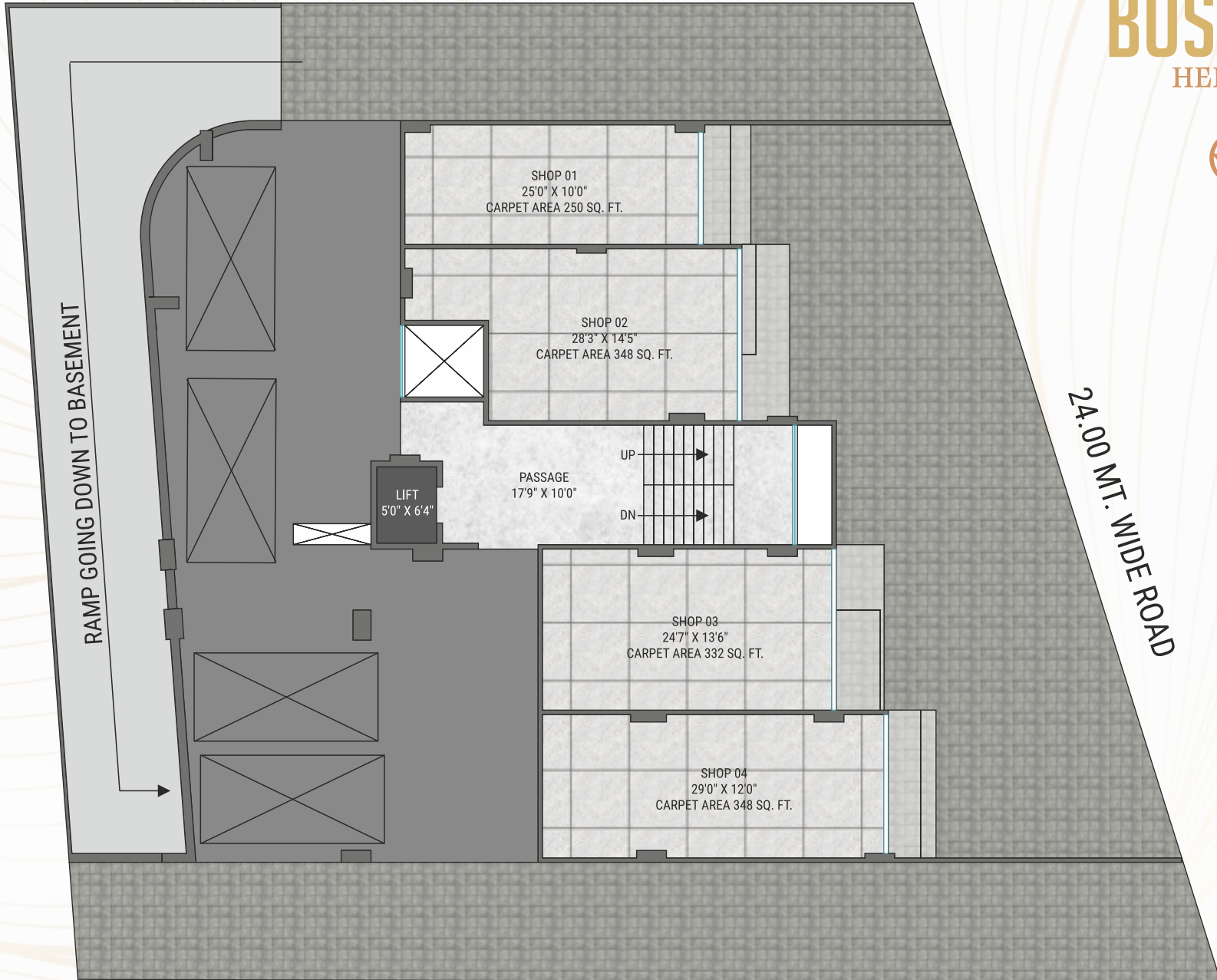
TYPICAL FLOOR

Floor: 1st to 8th

BUSHARA HEIGHTS



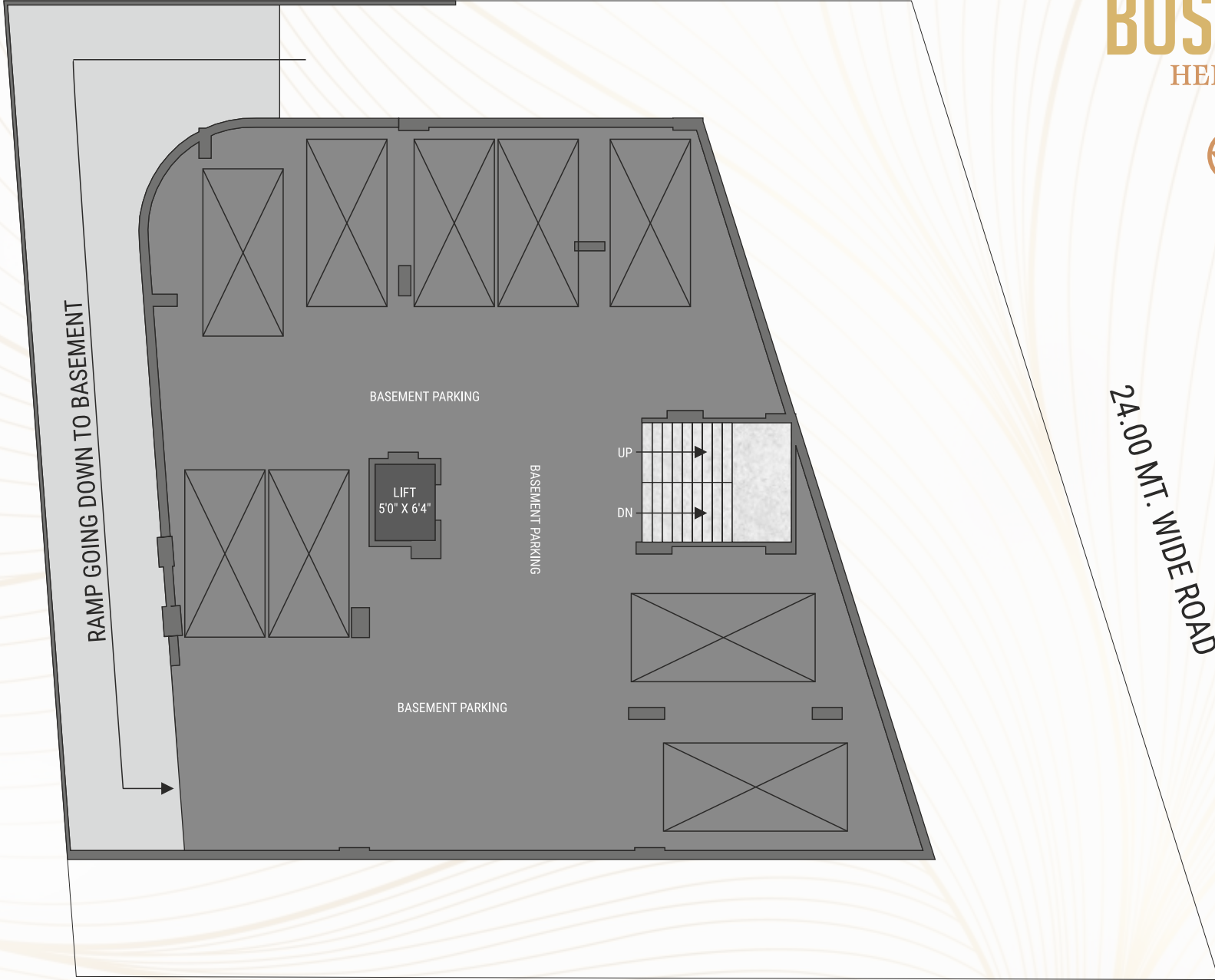
GROUND FLOOR



BUSHARA HEIGHTS



BASEMENT



BUSHARA HEIGHTS



24.00 M.T. WIDE ROAD

BUSHARA

HEIGHTS

AMENITIES

IBADAT KHANA

24X7 POWER BACKUP FOR COMMON AREA
FULLY AUTOMATIC SYNCHRONISED SMART LIFT
FIRE SAFETY SYSTEM ON EACH FLOOR WITH FIRE HYDRANT
PROVISION FOR BROADBAND INTERNET CONNECTIVITY

24X7 CCTV CAMERA

SECURITY GUARD FOR ENTRANCE GATE
SOLAR FOR COMMON METER
GENERATOR FOR LIFT & COMMON LIGHTS
AMPLE PARKING SPACE ON GROUND FLOOR

SPECIFICATION

STRUCTURE:

RCC Frame Structure with earthquake resistance designed as per indian standards.

FLOORING:

Vitrified Tiles Flooring in all rooms & balcony.
Kota stone flooring in wash area with dado tiles.
Kitchen platform with granite & S.S. sink & glazed dado tiles upto lintel level.
Lintel height tiles dado in washroom with branded washroom accessories.

ELECTRIFICATION:

Concealed electrical copper wiring with adequate electrical points.
Branded modular switches with LED lights for common areas.
Provision of A.C. with A.C. point provided in two master bedroom.
Well designed space allotted for outdoor A.C. unit

DOOR & WINDOW:

Aluminum window frame with glass sliding doors.
Marble/Stone on window sill.
Laminate finished main door with laminate or oil paint finish.

PLUMBING:

CPVC/UPVC cold and hot water supply pipe with suspended plumbing lines.
Ample amount of water storage due to underground and overhead water tank.
Concealed plumbing lines with branded sanitary wares and fittings.

WALL FINISH:

Internal Walls: Finished with white cement based putty & acrylic paint.
External Walls: Weather shield acrylic emulsion paint or texture.

BUSHARA HEIGHTS



Site:
BUSHARA HEIGHTS
Tandalja Sunpharma 30mt road
Tandalja, Vadodara.

Enquiry: 7874777001, 7874777009

Developer:
ZOYA Developers

Architect:
SPACEPLUS

Structure Engineer:
Zarna Associates

Legal Advisor
Khalid F. Pathan
Shahnawaz F. Pathan

PAYMENT SCHEDULE :-

25% BOOKING | 15% FIRST FLOOR SLAB & SECOND FLOOR SLAB | 15% THIRD FLOOR SLAB & FOURTH FLOOR SLAB | 15% FIFTH FLOOR SLAB & SIXTH FLOOR SLAB | 15% SEVENTH FLOOR SLAB & EIGHT FLOOR SLAB | 10% MASONRY WORK & PLASTER WORK | 05% FINISHING LEVEL

Notes :-

1) Possession will be given after one month of settlement of all accounts. 2) Documentation charges, stamp duty, MGVCL & VMSS charges, GST, legal charges & common maintenance charges will be paid extra by the purchaser. 3) Any new central or state government taxes, if applicable shall have to be borne by the purchaser. 4) Extra work shall be executed after making full payment. 5) Continuous default payments leads to cancellation. 6) Developers reserve the rights to change the plan, elevation, specification, any modification, addition or alteration in the scheme or any details here and will be binding to all. 7) In case of delay in water supply, light connection, drainage work by authority, developers are not responsible. 8) Any plans specifications or information in this brochure cannot form part of an offer, it is for easy understanding of the project and does not form the part of any agreement or legal binding on us. 9) Subject to Vadodara Jurisdiction.