



MISTRY
CROSSWAY
A LANDMARK OF FATEHGUNJ



MISTRY
CROSSWAY
A LANDMARK OF FATEHGUNJ

Developers:



INFRASTRUCTURE

Site: Mistry Crossway, Opp. Fatehgunj Petrol Pump,
Fatehgunj, Vadodara- 390002 (Guj.).

M.: **99980 48772, 99256 53177**
Email: mandfinfra@gmail.com

Office: Mistry Avenue, 201 Second Floor,
Opp. Free Looters Club, Fatehgunj,
Vadodara- 390002.

Architect:



Structural
Consultant:



design: stroke&arrow@9824092010

SHOWROOMS, SHOPS, 2BHK LUXURIOUS FLATS

AN ICONIC PROJECT AT

FATEH GUNJ

In the heart of the city and at the centre of all attention



CENTRAL LOCATION
Set in prime area of Fatehgunj



PREMIUM APARTMENTS
Luxurious and elegant 2 BHK flats



GRAND SHOPS
Road-facing smart retail shops



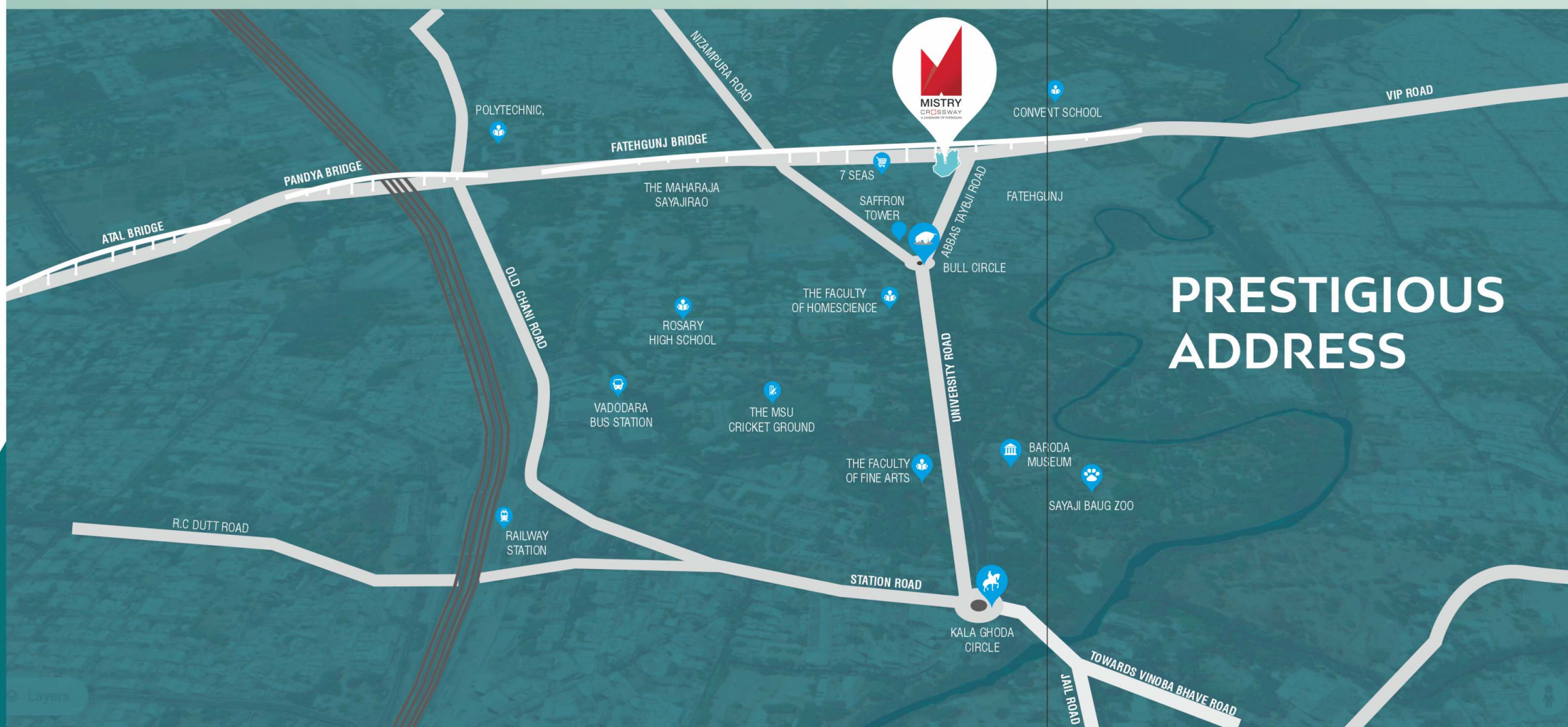
MODERN LIFESTYLE
Perfect planning for modern living



A masterpiece in the skyline, a marvel in design.

MAGNIFICENT ELEVATION





EASY ACCESS TO EVERYWHERE

	TRANSPORTATION	
	Vadodara Railway Station	2.02 km
	Vadodara Bus Station	1.09 km
	Vadodara Airport	3.5 km
<hr/>		
	SCHOOL/ COLLEGE	
	The MSU Baroda	900 mtr
	Convent School	400 mtr
	Rosary High School	1.01 km
	Shannen School	2.07 km
	Navrachana School	2.09 km
<hr/>		
	HOSPITALS	
	Our Lady of Pillar Hospital	300 mtr
	Narhari Hospital Bridge	1.04 km
	SSG hospital	2.02 km
	Tricolour Hospitals	3.08 km
	Bhailal Amin General Hospital	4.00 km
<hr/>		
	SHOPPING MALL	
	7 Seas Mall	300 mtr
	Centre Square Mall	3.00 km
	Vadodara Central Mall	3.00 km
	Inorbit Mall	3.07 km
<hr/>		
	RESTAURANT	
	Udupi Restaurant	0.00 mtr
	Sahyog Restaurant	0.00 mtr
	Rangoli Restaurant & Banquets	400 mtr
<hr/>		
	NEAR BY	
	Sayaji Baug	1.06 km
	Navlakhi Ground	4.00 km
	Laxmi Vilas Palace	4.00 km



HIGHLIGHTS

BUSINESS ALL SET TO GROW

At Mistry Crossway your business is sure to thrive. Thoughtfully crafted to offer maximum visibility and footfall, these retail shops come in multiple sizes to suit your business needs.

- Ideal Central Location
- Open Structure
- Road-Facing Frontage
- Convenient Access from Both Inside and Outside
- Thriving Residential Customer Base
- Impressive Glass Facades
- Versatile Unit Sizes to Suit Different Businesses
- Wide Walkways
- Luxurious Finishes and Elegant Interiors
- Ample Parking Facilities
- Dedicated Elevators for Convenience
- Beautiful Landscaping and Outdoor Amenities





GROUND FLOOR PLAN





VALUE ADDED AMENITIES

- Elegant Entrance Lobby
- Well designed compound wall with MS Gate and Security Cabin
- Standard quality elevators
- Water proofing treatment to the terrace
- Ample car parking with decorative paving
- Paved/Tremix internal roads with decorative lighting
- Water supply from bore with underground and overhead water tank with sensor
- Anti-termite treatment to the building
- Individual name plates & letterbox
- Fire hydrant system with fire extinguisher
- Power back up System for common amenities (Generator)

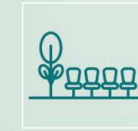


UNMATCHED LUXURY

Experience a life of your dreams right in the city.



 **LEISURE AMENITIES**



SIT-OUT FOR FRIENDLY CHATS



GAZEBO



CHILDREN'S PLAY AREA





THIRD FLOOR PLAN

ROAD

TOWARDS
PANDYA BRIDGE

FATHEGUNJ MAIN ROAD





FOURTH TO SEVENTH FLOOR PLAN

ROAD



LOWER TERRACE

LOWER TERRACE

LOWER TERRACE

TOWARDS PANDYA BRIDGE

FATHEGUNJ MAIN ROAD

2BHK FLOOR PLAN



SPECIFICATION



Structure:
Well designed RCC frame structure as per structural engineer's design.



Flooring:
Vitrified Tile flooring.



Plaster:
Internal Smooth Plaster / Outside sand face plaster



Colour:
Internal Walls with Putty finish. Outside Walls with Cement / Acrylic Paint



Kitchen:
Granite platform with SS kitchen sink and designer tiles up to lintel level over the platform



Bathrooms:
Designer tiles up to full height with standard quality bath fittings and sanitary ware.



Plumbing:
Systematic well concealed CPVC/ UPVC plumbing fitting



Doors :
Decorative main door with standard safety lock and fittings. All other internal doors are flush doors with laminates on both sides.



Windows :
Anodized Aluminum section windows with reflective glass & Granite framing.



Electrification:
Concealed copper ISI wiring and good quality modular switches with sufficient points. Geyser point in bathrooms. MCB in main distribution board.

