



# HARMAIN 33



Scan For Location

PROJECT BY



For Booking Contact **09428122429**  
E : harmainrealtors33@gmail.com

SITE ADDRESS : FINAL PLOT NO. 33, T.P. SCHEME NO. 85,  
NR. AMWAJ RESIDENCY, SARKHEJ, AHMEDABAD.

Architect & Engineer



Structure Designer



EXCLUSIVE 2 BHK RESIDENTIAL FLATS & SHOPS

# HARMAIN 33

N.A. NOC TITLE CLEAR







EXCLUSIVE 2 BHK RESIDENTIAL FLATS & SHOPS

#### AMENITIES

Common Plot  
Children Play Area  
Gazebo With Senior Citizen Sitting  
Car Parking  
Attractive Main Entrance  
CCTV Surveillance  
24/7 Security Services  
Solar Panel for Common Light







GROUND FLOOR LAYOUT PLAN

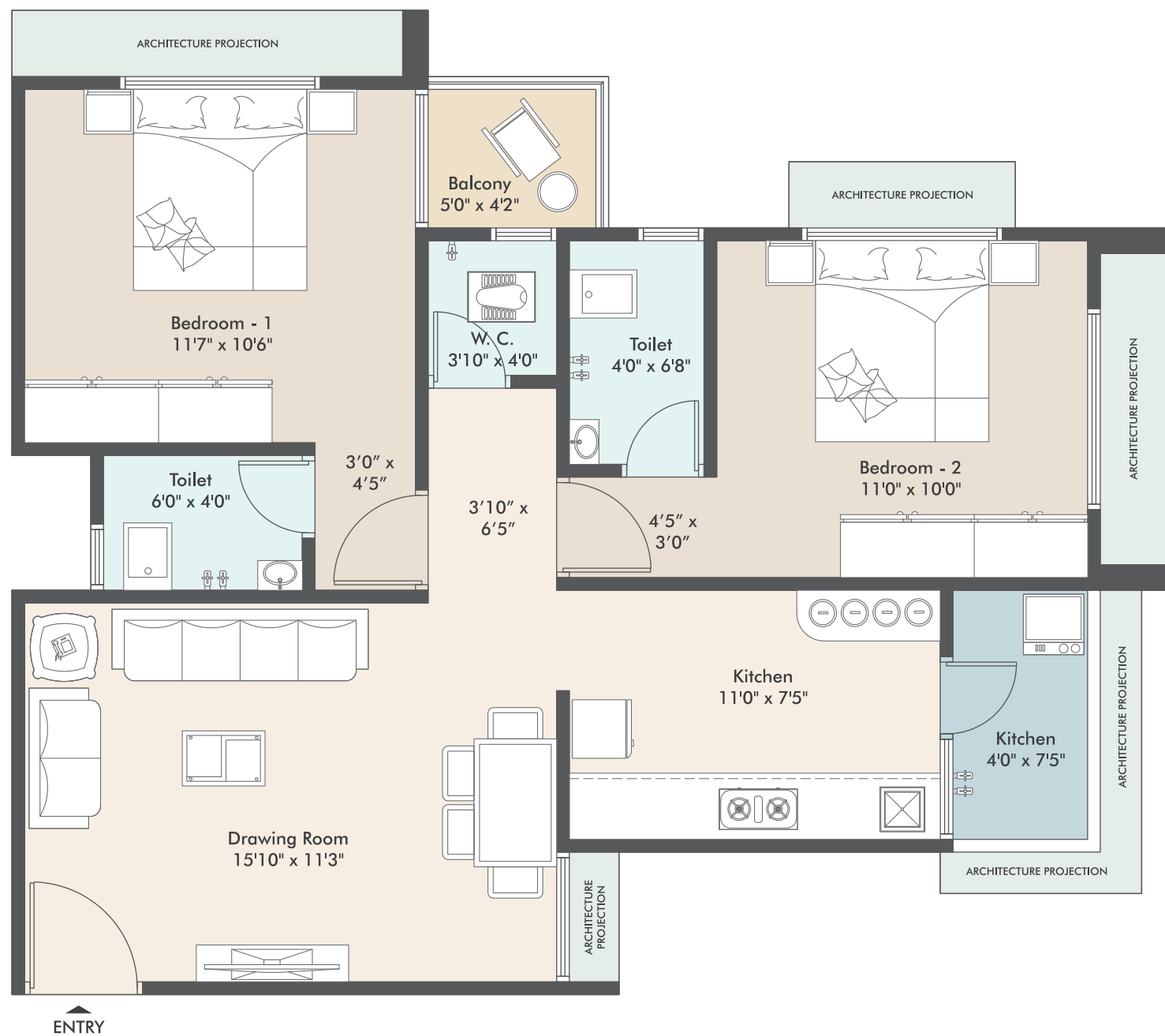






TYPICAL FLOOR LAYOUT PLAN

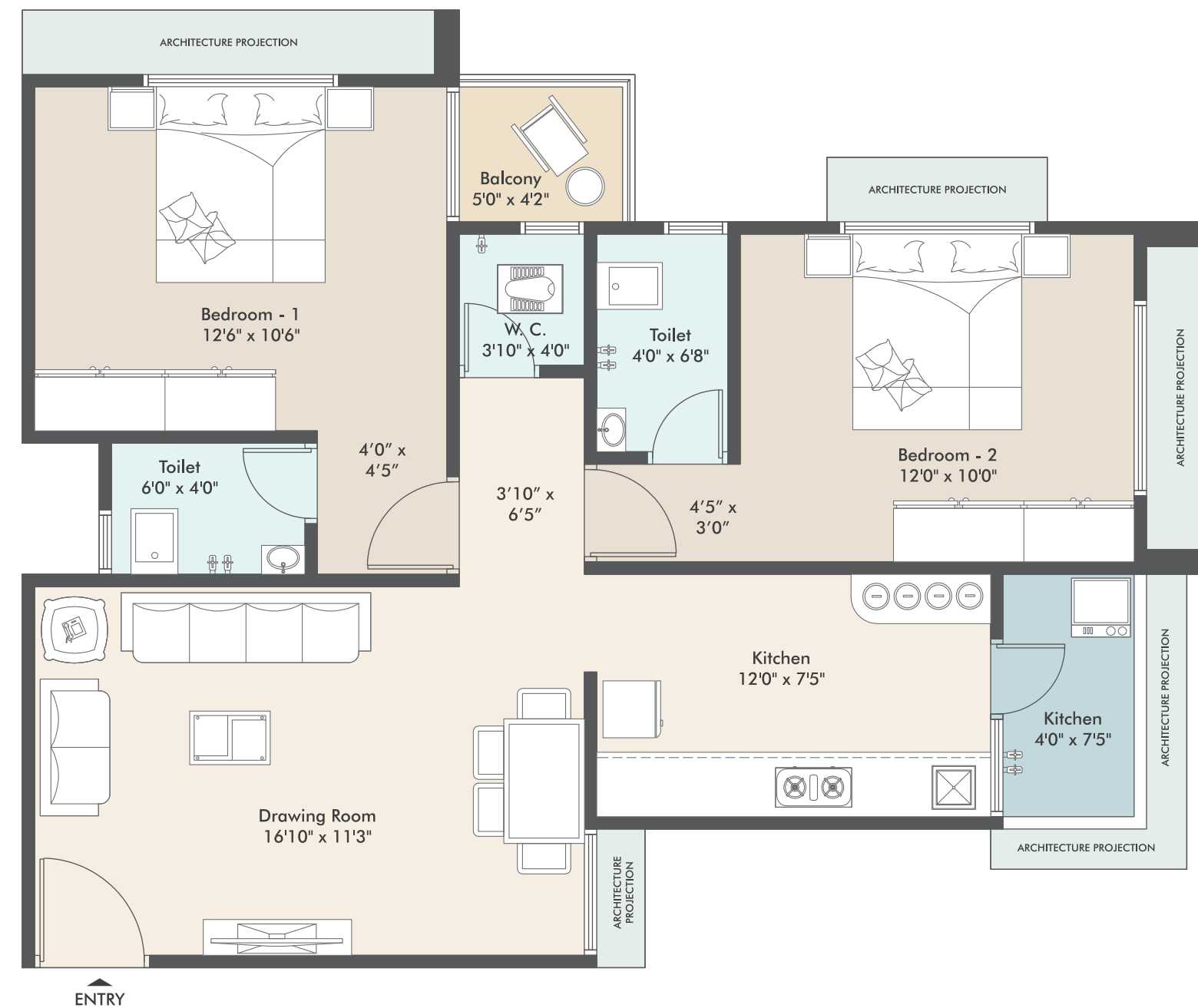




UNIT PLAN - TYPE 1  
(BLOCK - A, B, C)

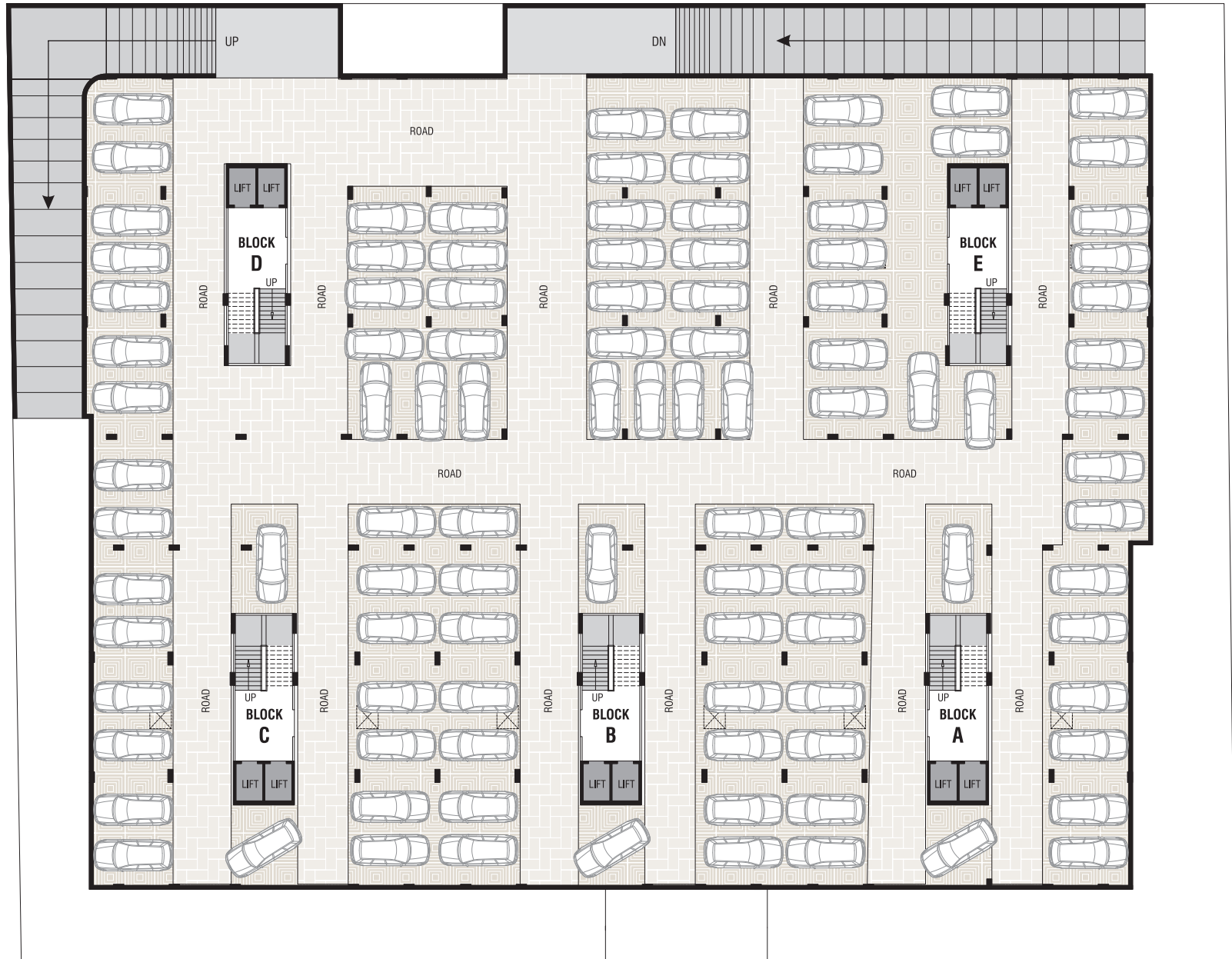


EXCLUSIVE 2 BHK RESIDENTIAL FLATS & SHOPS



UNIT PLAN - TYPE 2  
(BLOCK - D, E)





## BASEMENT PLAN

**LEGAL NOTES :** GST, Stamp duty, registration charges, gas connection, legal documentation charges AUDA/AMC charges and torrent power charges including cable and sub-station cost to be charged extra. Any additional charges, taxes, cess or duties levied by the Government / Local authorities during or after the completion on the scheme will be borne by the purchaser. All rights for materials and plan remains with developers. Dimensions mentioned here are approximate. Irregular payment cause the cancellation of booking. Possession of the apartment shall be offered only after full payment with society maintenance deposit. In the interest of continual development in design & quality of construction, the developer reserves all the rights to make any changes in the scheme including technical specifications, designs, planning and layout and all the purchasers shall abide by such changes. Changes / alterations of any nature including the price, no. of apartments and no. of floors or any other change will be at the sole discretion of the developer. Changes / alterations of any nature including the elevations, exterior color scheme of the apartments or any other change affecting the overall design concept & Outlook of the schemes are strictly NOT PERMITTED during or after the completion of the scheme. This brochure is intended only to convey the essential design and technical features of the schemes and shall not be construed to form part of the legal document.



### ANTI-TERMITE TREATMENT

- Entire campus will be treated pest control treatment.

### GAS CONNECTION

- Gas Connection Line in the Kitchen.

### HIGH SECURITY

- C.C.T.V. Camera & Security guard 24/7.
- Fire safety provision as per authority norms.

### TITLE

- Registered sale deed for Individual members
- Building Use Certificate
- Loanable Clear Title.
- Airport N.O.C.
- Fire N.O.C.
- Lift Licence
- N.A. Land

### GREEN BUILDING CONCEPT

- Tree plantation in the entire campus.
- Solar System for common area.

### ENTRANCE GATE & COMPOUND WALL

- Well designed & lighted project name shield.
- Well designed compound wall around the campus with decorative lights.

## SPECIFICATION



### STRUCTURE

Earthquake resistant safe & sound RCC frame structure



### PLASTER

Internal mala plaster with putty finish.  
External double coat sand faced plaster with acrylic paint.



### FLOORING

Best quality vitrified tiles in flooring.



### KITCHEN

Granite sandwich platform with S.S. sink.  
Designer wall tiles upto lintel level height.



### BATHROOM

Lintel height designer glazed tiles in all toilets.  
Standard quality sanitary ware & fitting in all toilets.



### ELECTRICAL

Concealed ISI copper wiring with modular switches & MCB.  
A.C. points in bedrooms & drawing room.  
Sufficient electric points in all rooms.



### LIFT

Premium quality high speed two elevators with automatic door in all blocks.



### WATER TANK

Underground common & overhead water tank.  
Separate control valve for each & every flats.



### WINDOWS

Fully glazed anodized aluminum windows.



### DOOR

Decorative main door and other doors are flush door with granite frame.