



Developer

**H SQUARE  
BUILDERS**

Site Address

Hayat Park, Opp. Kamla Nagar Talav, Near Ebrahim Bawany Industrial Training Centre (ITI), Behind Zainab Park, Ajwa Road, Vadodara.

Call

+91 98984 32717 | +91 98985 10767

Website

[www.hayatbuilder.com](http://www.hayatbuilder.com)

SCAN FOR  
BROCHURE



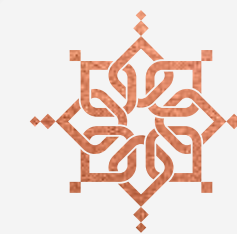
SCAN FOR  
LOCATION



SCAN FOR  
WEBSITE



SCAN FOR  
INSTAGRAM



**HAYAT  
PARK**



SCAN FOR RERA - PHASE 1

MAA15595/  
250725/311231



gujrera.gujarat.gov.in

SCAN FOR RERA - PHASE 2

RAA15407/  
240625/311231



gujrera.gujarat.gov.in

## *The finer side of Home*

Tucked away from the city's constant rush, Hayat Park open doors to a lifestyle that values quiet elegance over loud statements. This is where every detail from the gentle layout of green courtyards to the stylishly designed homes that reflect care, comfort, and class.

With 2 & 3 BHK homes designed for modern living, Hayat Park invites families, professionals, and dreamers alike to discover what it truly means to live well. Add to that a clubhouse, gym, garden zones, and strong community spaces and what you have is more than an address. You have your personal escape, right within the city.



**2 & 3 BHK FINE LIVING**



*For the life you have always wanted*

The elevation is marked by clean symmetry, soft finishes, and a timeless charm that stays, forever. It's the kind of elegance that grows on you. At Hayat Park, architecture doesn't just shelter. It speaks softly, subtly, and sincerely. Here, the design nurtures a sense of belonging. Buildings are spaced not just for light and ventilation, but for connection. It's a place that offers the comfort of connection, without crowding your quiet.

*Styled*  
With Subtlety



*Quietly*  
Well-Placed

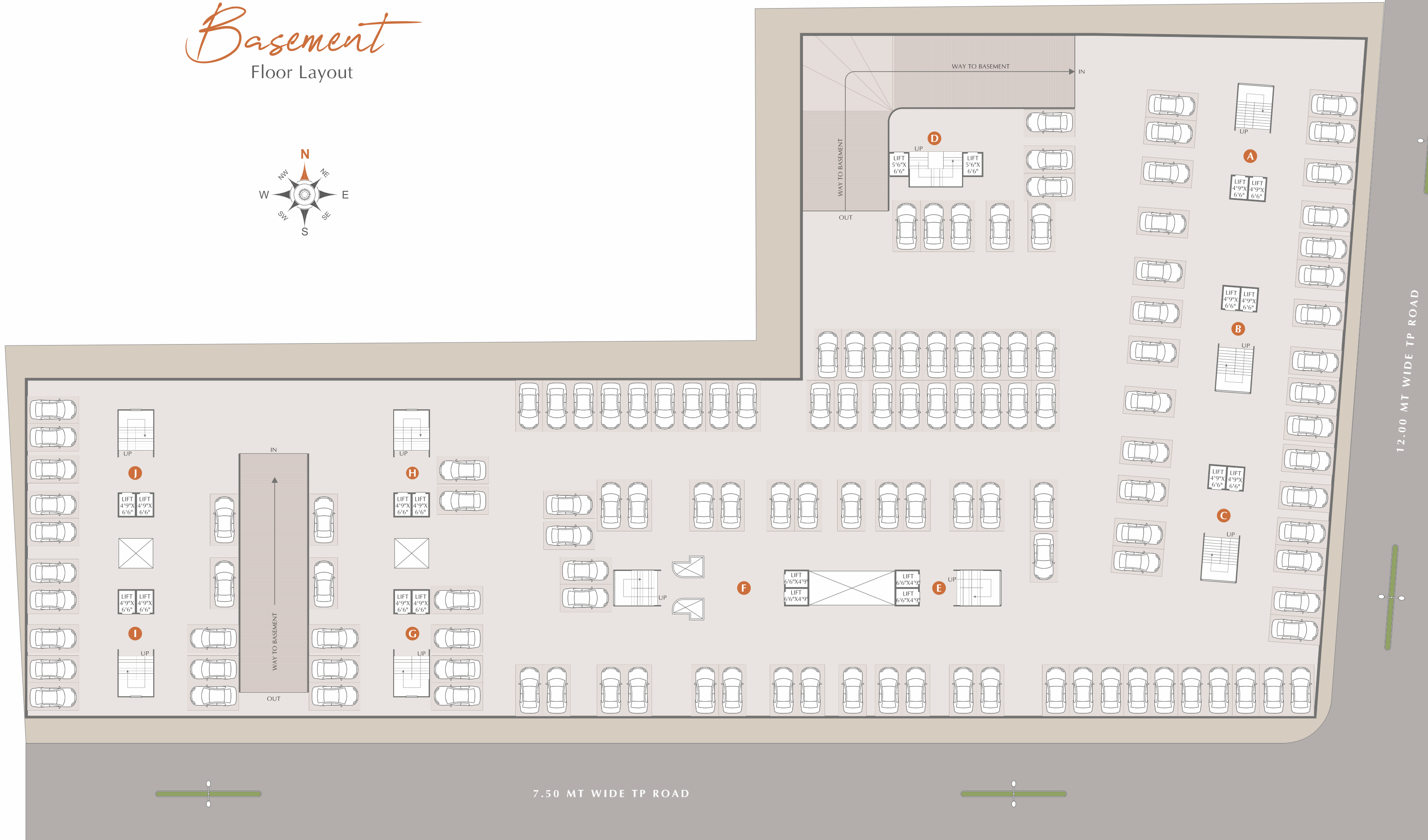
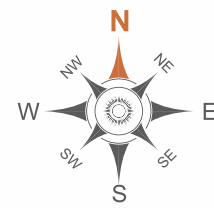
The address brings with it both peace and proximity. With wide access roads, generous green zones, and well-laid infrastructure, it offers a kind of breathing space that's hard to find in today's crowded cityscape. Life here moves effortlessly not just on the roads, but in the way people live, interact, and feel at home.

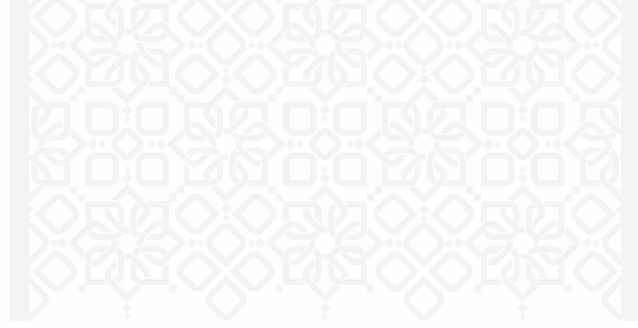




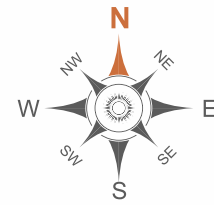
# Basement

Floor Layout





# Ground Floor Layout



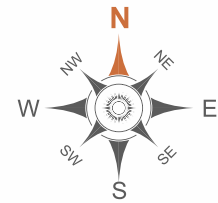
**PHASE - 1**

- TOWER - A & C | 3 BHK FLAT | PAGE : 24
- TOWER - A, B & C | 2 BHK FLAT | PAGE : 25
- TOWER - D | 2 BHK FLAT | TYPE : 1 | PAGE : 26
- TOWER - D | 2 BHK FLAT | TYPE : 2 | PAGE : 27

**PHASE - 2**

- TOWER - E - F | 2 BHK FLAT | TYPE : 1 | PAGE : 30
- TOWER - E - F | 2 BHK FLAT | TYPE : 2 | PAGE : 31
- TOWER - G, H, I & J | 2 BHK FLAT | TYPE : 1 | PAGE : 32
- TOWER - G, H, I & J | 2 BHK FLAT | TYPE : 2 | PAGE : 33

*Typical*  
Floor Layout - 1st to 7th



This is an immaculately planned space to refresh your living. The gym energizes your mornings, the game room adds cheer to your evenings, and the multipurpose hall becomes a canvas for celebrations, festivals, and community events. Just beyond, the outdoor zones extend this spirit of wellbeing with green spaces for children to run free, and quiet sit-outs to inhale the good times.

*The Clubhouse*  
Of Good Living



# *Outdoor bliss*

Elegantly Designed

Smartly designed play areas, cycling paths, and open lawns turn every day into a chance to live a little lighter, smile a little wider. At Hayat Park, the outdoors becomes an experience. Where laughter races bicycles, and little footsteps chase sunshine. Open lawns and playful corners invite families to step out and breathe in moments that matter. Along with the quiet joy that lingers long after play ends.



# Clubhouse

## Floor Plan



**GROUND FLOOR PLAN**

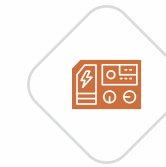


**FIRST FLOOR PLAN**

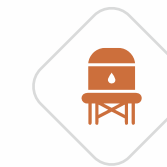
# Amenities



**PARKING**  
Basement & Ground Floor  
Parking Provision



**BACK-UP GENERATOR**  
for common amenities



**WATER TANKS**  
Underground and overhead  
tanks for 24 hours water supply  
with auto control mechanism



**ENTRANCE GATE**  
The grand entrance  
that sets the tone for an  
unforgettable experience



**SECURITY CABIN**  
Guarding Your Safety,  
Securing Your Peace



**24 HOUR CCTV  
SURVEILLANCE**  
for common amenities



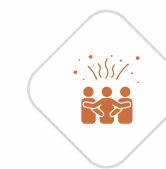
**GARDEN**  
A green pause between  
the rush and the rest.



**JOGGING TRACK**  
A track that keeps up  
with your spirit.



**MULTIPURPOSE HALL**  
A flexible space for festive  
celebrations & joyous gatherings.



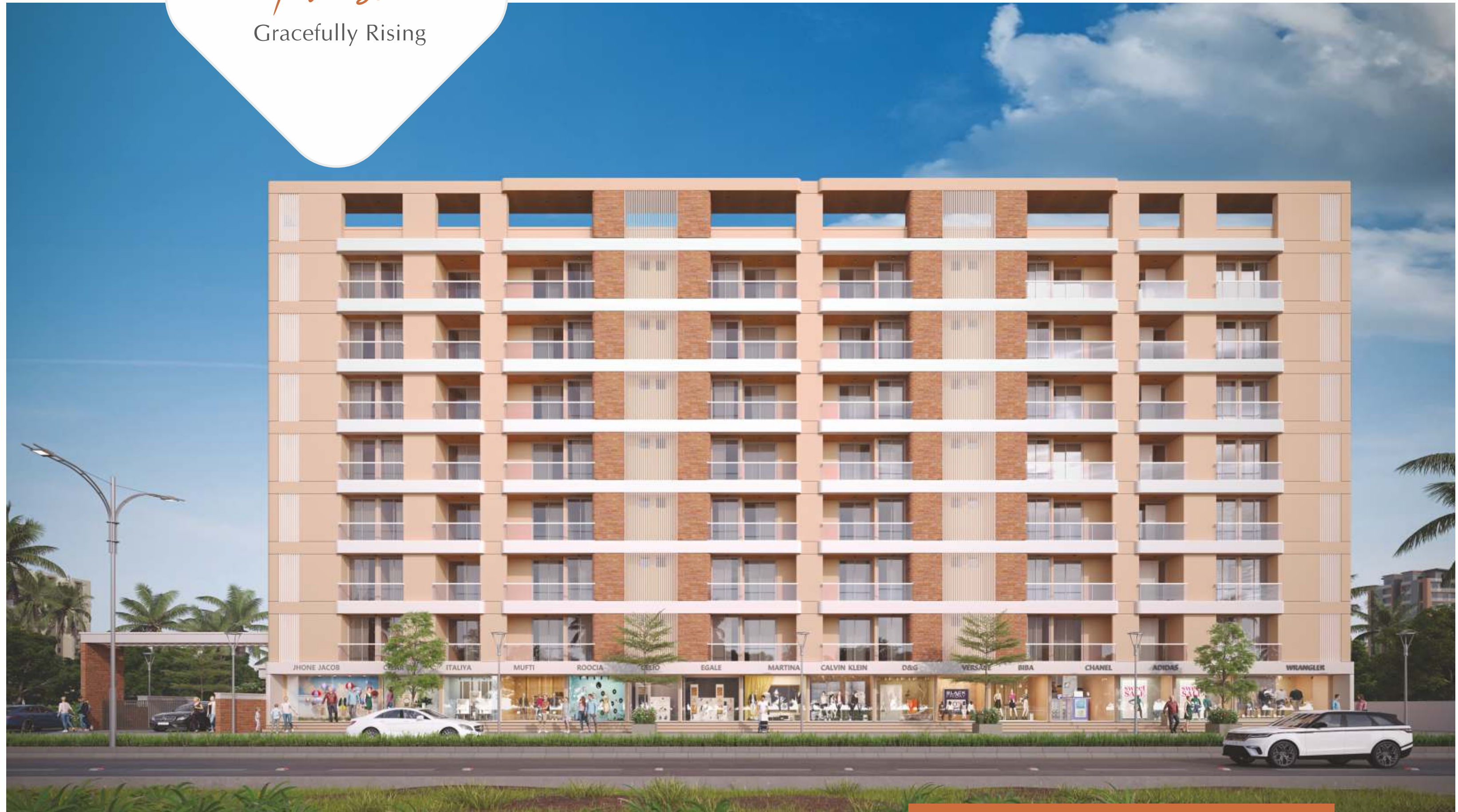
**COMMUNITY HALL**  
Joy lives here,  
in every shared smile.



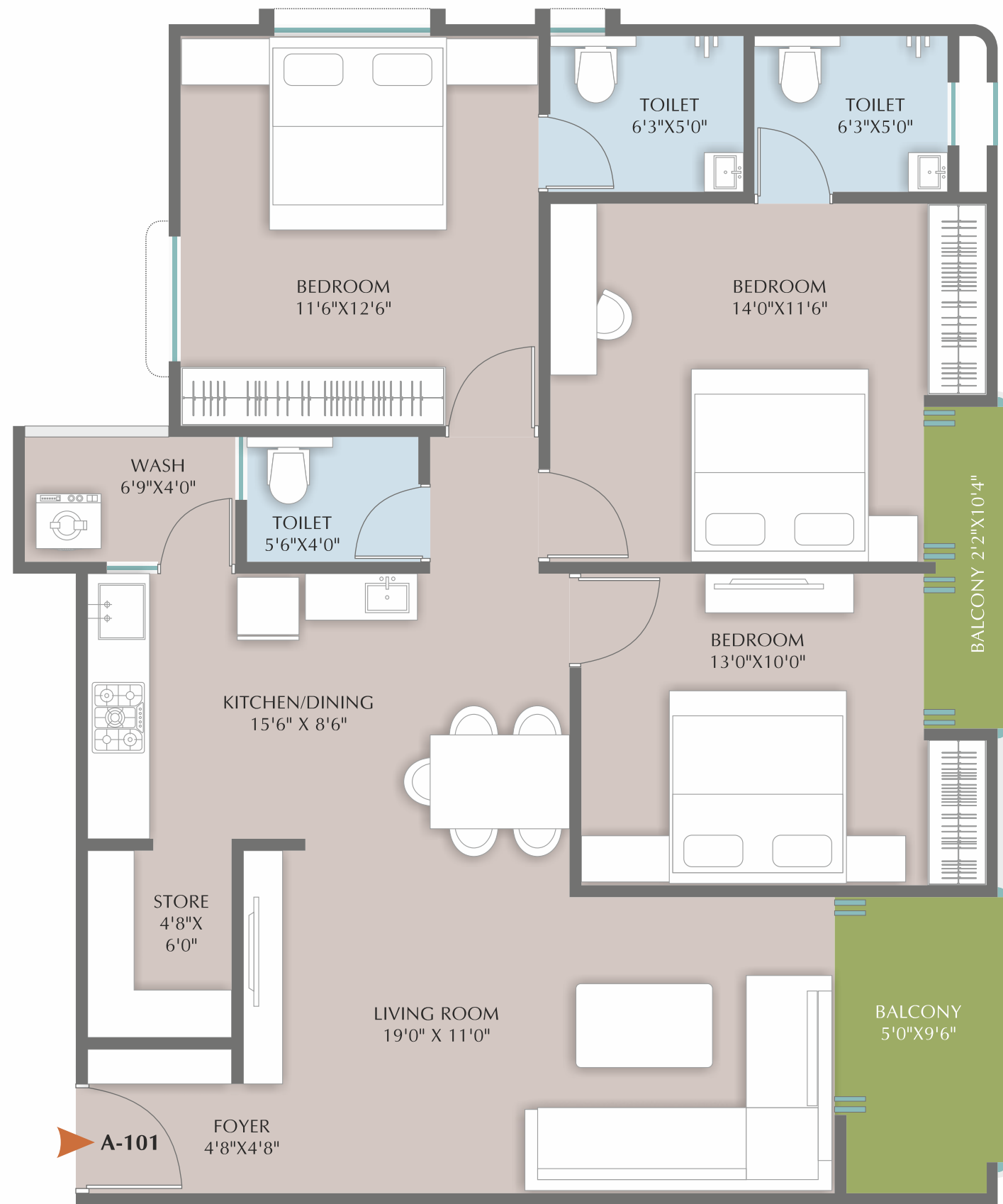
**KIDS PLAY AREA  
WITH EQUIPMENT**  
A world of slides, swings,  
& smiles.

*Phase 1*  
Gracefully Rising

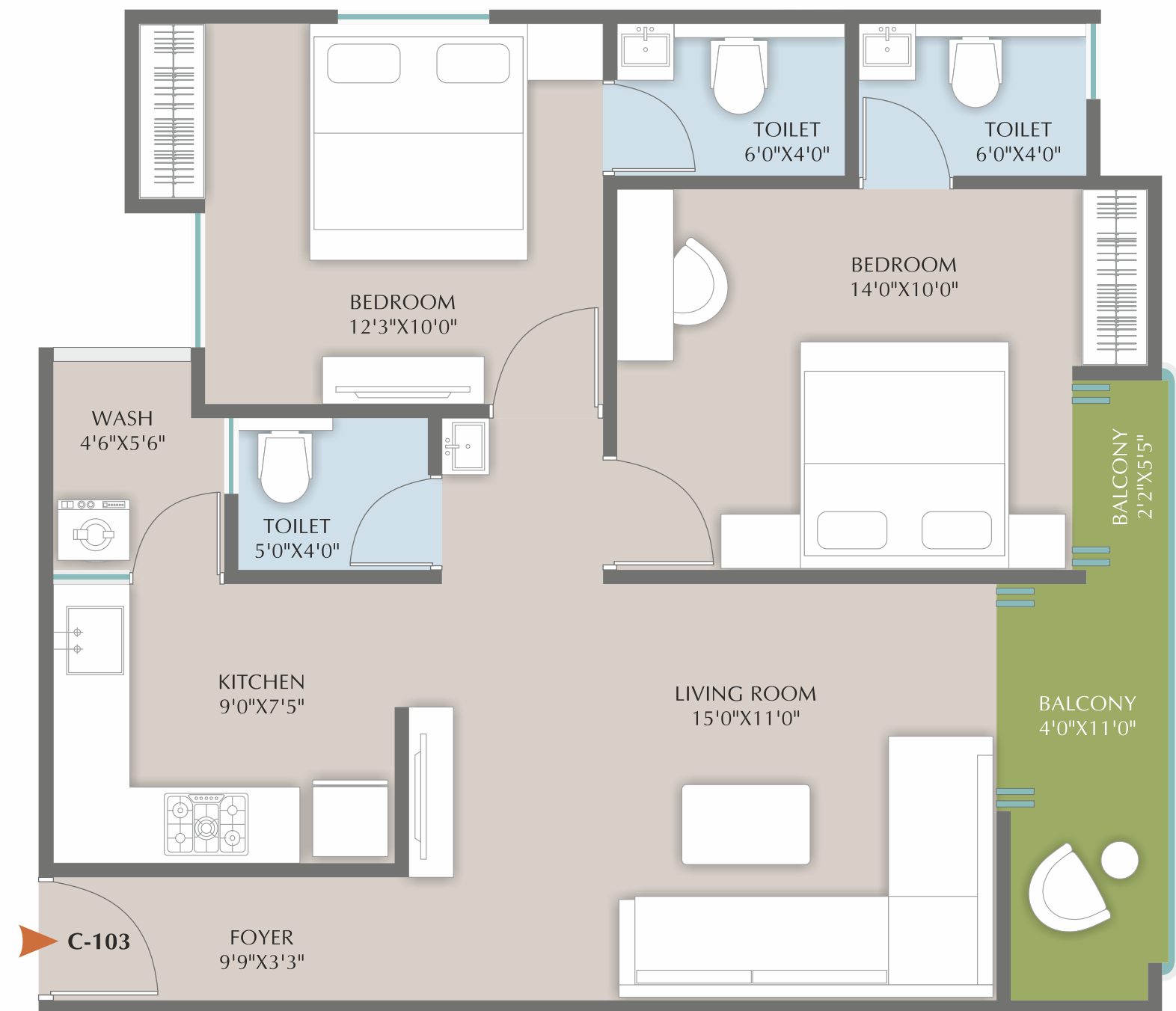
Phase 1 stands as a quiet example of what well-planned living should look like. No excess. No clutter. Just the right balance of space, light, and design. The layout is open yet organised, allowing green patches to breathe between buildings, and movement to feel seamless. Every detail, from finish to facade, reflects luxury. Phase 1 speaks softly with elegance that's felt.



*Tower A - C*  
 Typical Floor Plan  
**3 BHK**  
 B.U.A.: 1093 SQ.FT.



*Tower A - B - C*  
 Typical Floor Plan  
**2 BHK**  
 B.U.A.: 757 SQ.FT.



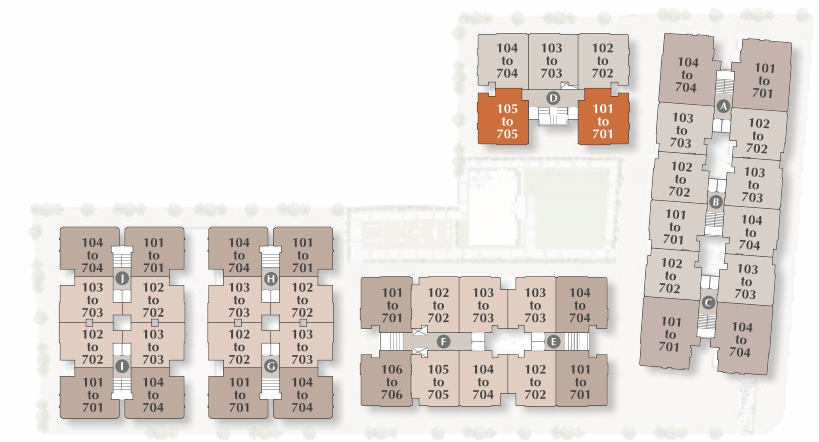
Smartly designed 2 BHK all bed room with ATT toilet and 1 extra toilet for common use

*Tower D*  
 Typical Floor Plan  
**2 BHK | TYPE - 1**  
 B.U.A.: 777 SQ.FT.



Smartly designed 2 BHK all bed room with ATT toilet and 1 extra toilet for common use

*Tower D*  
 Typical Floor Plan  
**2 BHK | TYPE - 2**  
 B.U.A.: 746 SQ.FT.



Smartly designed 2 BHK all bed room with ATT toilet and 1 extra toilet for common use

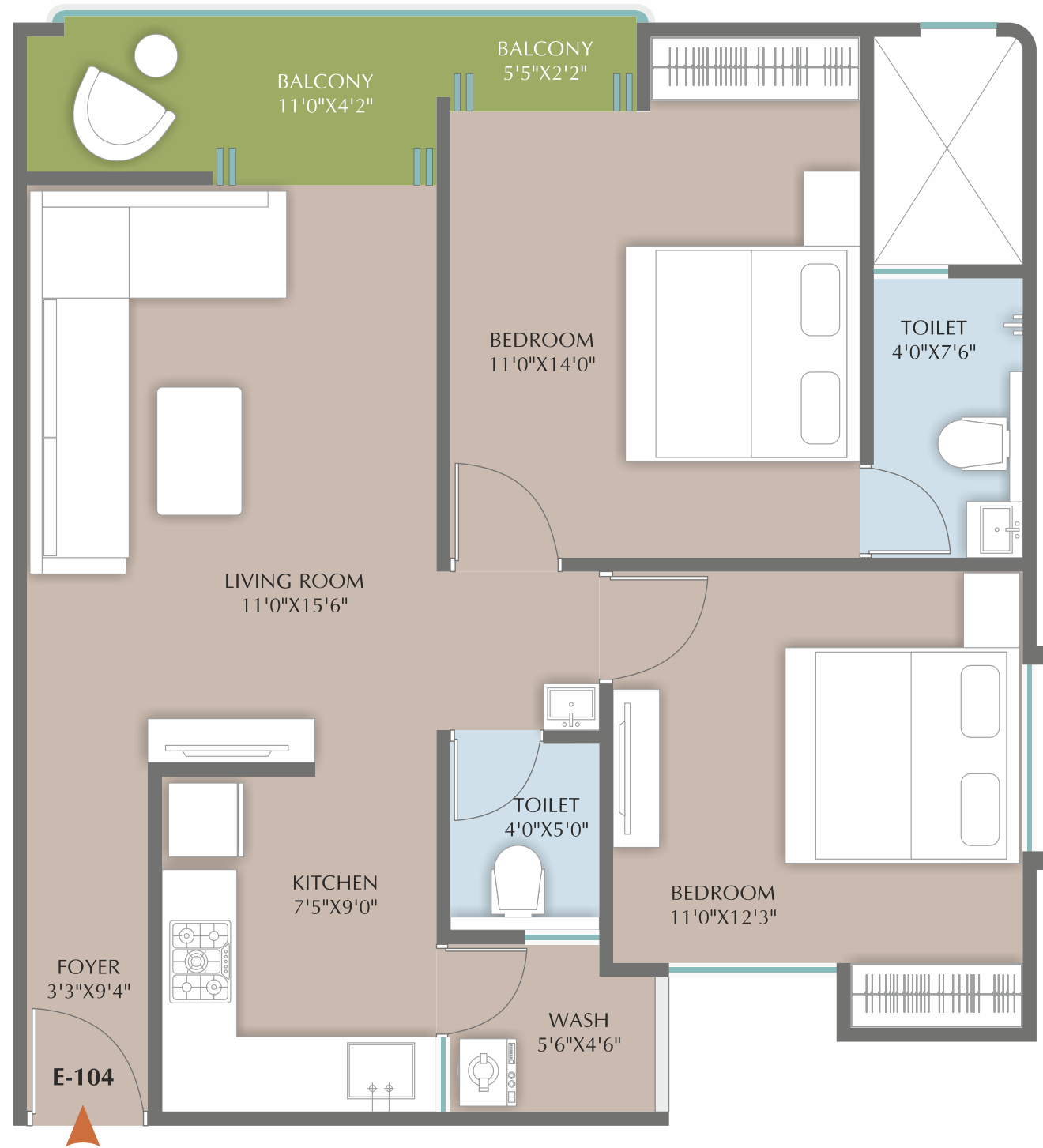
# Phase 2

Elegance Expands

Built on the same foundation of calm design and considered living, Phase 2 at Hayat Park carries the story forward with space, greenery, and reasons to feel at home. The buildings rise with the same understated elegance, seamlessly blending into the existing fabric of the community. Each apartment is planned for natural light, cross-ventilation, and privacy.



*Tower E-F*  
 Typical Floor Plan  
**2 BHK | TYPE - 1**  
 B.U.A.: 759 SQ.FT.



*Tower E-F*  
 Typical Floor Plan  
**2 BHK | TYPE - 2**  
 B.U.A.: 729 SQ.FT.



*Tower G-H-I-J*  
 Typical Floor Plan  
**2 BHK | TYPE - 1**  
 B.U.A.: 754 SQ.FT.



*Tower G-H-I-J*  
 Typical Floor Plan  
**2 BHK | TYPE - 2**  
 B.U.A.: 694 SQ.FT.



*A homely start with space for stories*





*Let life linger beautifully*



# Specification

## **STRUCTURE**

Earthquake resistant RCC framed structure as per structural consultant's design.

## **PLUMBING & SANITARY WORK**

Concealed PVC/CPVC Plumbing with branded Fittings and Fixtures

## **ELECTRICAL**

Branded ISI concealed Copper wiring with suitable ELCB in each flat.  
Elegant Modular Switches & Sockets.  
Sufficient electrical points as per architect's design.

## **DOORS & WINDOWS**

Main Door: Wooden Main Door.  
Internal Door: Attractive Flushed Internal Door with Granite Framing with Safety Lock.  
Windows: Anodized Heavy Aluminium Section windows with Granite Framing

## **KITCHEN**

High quality Granite or equivalent platform with S.S. Sink & designer full height dado tiles

## **WALL FINISH**

Internal wall : Wallcare Finished with Birla Putty.  
External walls: Double Coat Plaster with weather resistant, exterior textured paint

## **FLOORING & CLADDING FLOORING**

Premium Vitrified Tiles with skirting in entire apartment

## **CEILING**

False ceilings in Main Hall

## **BATHROOM**

Premium designer tiles with matt finished



<b>Architect:</b> space plus	<b>Structure:</b> ZARNA ASSOCIATES Structural Consultants	<b>3D Design:</b> LUCID THE ARTISTRY www.lucidtheartistry.com	<b>Brochure Design:</b> ZURICH GRAPHICS www.zurichgraphics.com
---------------------------------	---	---	--

**Payment Terms:**  
 15% At the time of Booking | 15% At the time of Agreement | 10% Plinth Level  
 10% Slab Level | 10% Outside Plaster | 10% Inside Plaster | 10% Flooring Level  
 10% Sanitary Fitting/Colour | 10% At the time of Sale Deed/possession

**WE REQUEST**  
 Stamp duty, registration charges, legal charges, GEB/VMC charges, society maintenance charges etc. shall be borne by the purchaser. GST, TDS & all other Taxes levied in future will be borne by the purchaser. Any Additional charges or Duties levied by the government/local authorities during or after the scheme like VMC Tax, will be borne by the purchaser. In the interest of continual developments in design & quality of construction, the developer reserves all rights to make any changes in the scheme including technical specification, designs, planning, layout & all purchaser shall abide by such changes. Changes/Alteration of any Nature including elevation, exterior color scheme, balcony Grill or any other changes affecting the overall design concept & lookout of the scheme are strictly not permitted life time. Any RCC member (beam, column & slab) must not be damaged life time. Low-voltage cables such as telephone, TV and Internet cables shall be strictly laid as per consultant's service drawings with prior consent of developer/builder office. No wire/cables/conduits shall be laid or installed such that they from hanging formation on the building exterior face. Common passage area is not allowed to be used for personal purpose. This brochure is intended only for easy display & information of the scheme and does not form part of legal documents.

**NOTES**  
 All rights for Alteration/Modification and development in design or specifications by architects and/or development shall be binding to all the members. BUC (Building Use Certificate) as per VMC rules, clear title for loan purpose. This brochure is for private circulation only. By no means, it will form part of any legal contract. In Case of Cancellation of Booking the refundable amount shall be given only where the same property is booked and paid for by the new purchaser, Administration charges of 25% of the booking amount and the amount of extra work done (if any) shall be deducted from the refund.

**LEGAL DISCLAIMER**  
 All furniture/objects shown in the plan are for presentation & understanding purpose only. By no means, it will form a part of final deliverable product. All the elements, objects, treatments, materials, equipment & color scheme shown are artisan's impression and purely for presentation purpose. By no means, it will form a part of the amenities, features or specification of our final products.