

KEY PLAN



Developers:  
GREY ENTERPRISE (PROP. SHABBIRBHAI MUSABHAI PATEL)

ADDRESS:  
"ETIHAD TOWERS",  
Beside Al-Rehman Residency,  
Nr. Darul Uloom,  
Tandalja-Vasna Road, Vadodara.

MOB:  
7405128027,  
9099024261

EMAIL:  
anaspatel520900@gmail.com

ARCHITECT  
space plus  
Architecture • Planning • Interiors

STRUCTURE  
ZARNA  
ASSOCIATES

PAYMENT TERMS

SHOPS: 10% Booking | 15% within 30 days | 15% plinth level | 25% Ground floor slab | 15% masonry | 10% Plaster | 5% Flooring Level | 5% Finishing Level  
FLATS: 10% Booking | 15% within 30 days | 15% Ground floor slab | 5% 1st slab to 7th slab | 5% masonry | 10% Plaster level | 5% Flooring Level | 5% Finishing

**DISCLAIMER:** The following will be charged extra in advance / as per Government norms - (a) Stamp duty and registration charges. (b) GST (actual) or any such additional taxes if applicable in future. • if any new taxes applicable by Central or State Government in future it will be borne by the customer • Premium quality materials or equipment branded products shall be used for construction work. • Right of any changes in dimensions, design & specifications will be reserved with developer, which shall be binding for all members. • External changes are strictly not allowed. • MGVCCL meter deposit should be levied separate • Each member needs to pay maintenance deposits separately • In case of booking cancellation, amount will be refunded from the booking of same premises and minimum of rupees 50,000/- will be deducted from the booking amount • Extra work at the cost of client with prior estimate needs to be given in advance but no change in elevation and plan will be done • The developer reserve the full right to make any changes • This brochure does not form a part of agreement or any legal document, It is easy display of project only • Right of any changes in dimensions, design and Layout, specifications, elevation will be reserved with the developers. • Developer will not be held responsible for any delay in possession in case relevant avenues will not be provided by corporation, Madya Gujarat Vigh Company (drainage, water, Light) • Jurdiction to Vadodara.

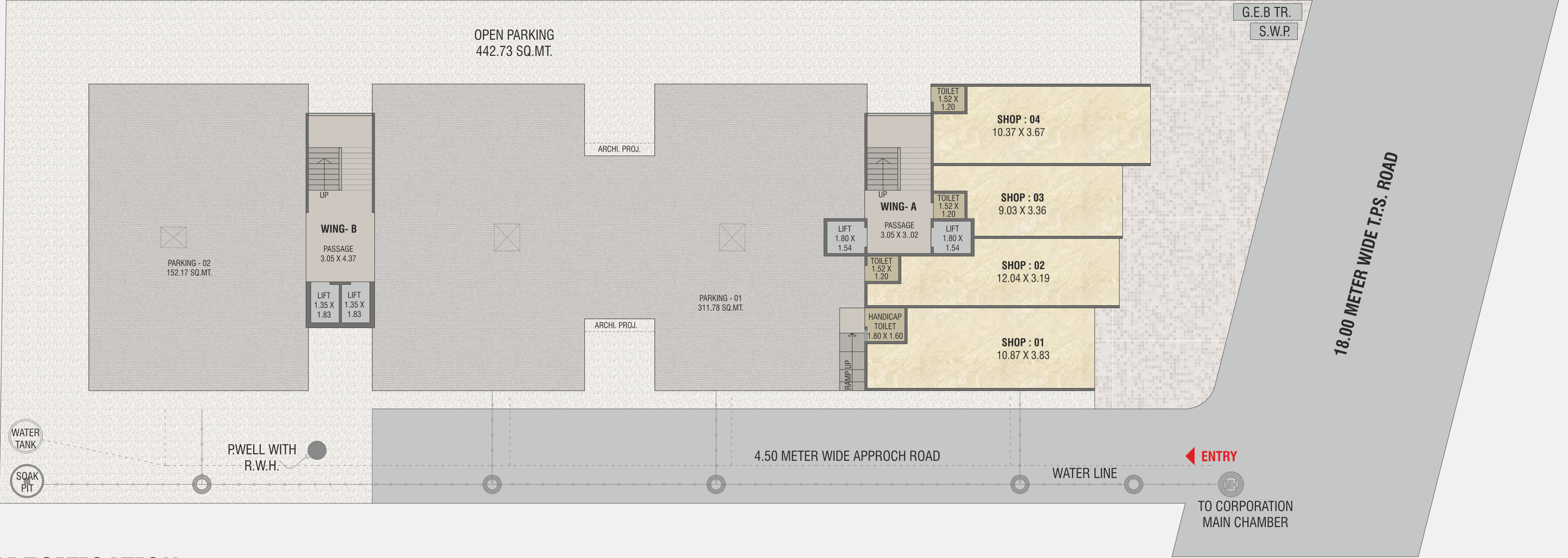
Above project is registered under Gujrera.  
For further details: visit: [www.gujrera.gujarat.gov.in](http://www.gujrera.gujarat.gov.in) under registered project. RERA REGISTRATION NO.:

HONEST CR\_98243 85808



SHOPS & 2-BHK FLATS

# LAYOUT PLAN



## SPECIFICATION

### Structure

- all rcc & masonry work as per structural engineer’s design
- elevation work as per architect design

### Doors & windows

- attractive entrance door with standard safety lock.
- internal stone frame and flush door with both side leminate.
- aluminum windows with safety grill

### Flooring

- 600 x 600 vitrified tiles flooring in all rooms.
- passage area & stair case with vitrified tiles or granite

### Kitchen

- granite platform with s. S. Sink
- designer tiles above platform and upto lintel level

### Bathrooms

- bathroom with glazed tiles fitting up to lintel level in all bathrooms
- standard quality sanitary ware & fittings.
- concealed internal plumbing work

### Electrification

- concealed wiring of standard quality with tv, fridge point & ac point in master bedroom

### Paint & finish

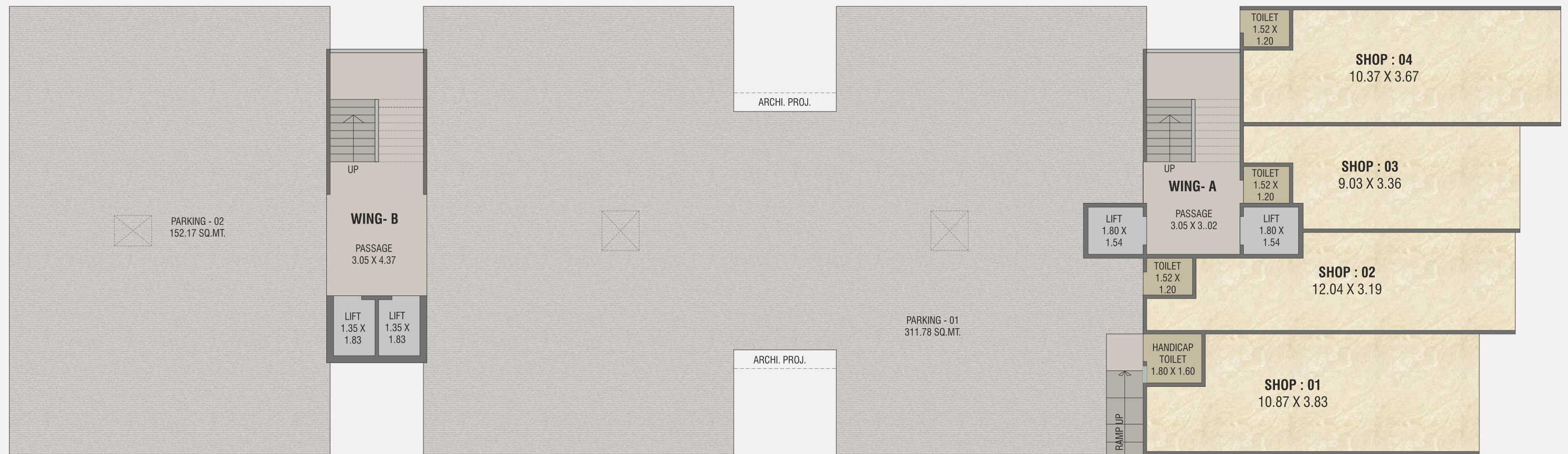
- internal smooth cement plaster with good quality primer and putty.
- external double coat plaster with standard quality of paint.

## AMENITIES

- Street lights in campus
- Parking area cover with paver block
- CCTV camera for security in premises
- Architecture plantation
- Decorative main Entrance Gate
- Standard quality passanger two lift with ARD system
- Number plates & Letterbox
- Water purifier in each flat
- Fire extinguisher pipes for fire safety on each floor passage
- 24 Hours bore water supply
- Automatic pressure sensor system for overhead water tanks
- Antitermite treatment
- Brickbat water proofing treatment and china mosaic in terrace



## GROUND FLOOR PLAN



## TYPICAL LAYOUT PLAN





